

Volume 30, No. 2

April, 2011

glass on metal®

THE ENAMELIST'S MAGAZINE



Edmund Massow Exhibition

Donau-Kurier, November 5, 2010

Edmund Massow of Geiselfeld, Germany held an exhibition of 35 enameled paintings displayed on the walls and two glass cabinets filled with enameled jewelry and vessels. Having shown work in many international exhibitions, Edmund had his enamel art works on display in his hometown. The Exhibition took place in the entrance hall of the City Hall building in Geiselfeld. The exhibition was on display from November, 2010 to the end of January, 2011.

Edmund was born in 1932 in the Ruhrrevier-city Oberhausen. He started learning enameling on his own, in 1960. Since the 1980's he has participated in many

international enamel exhibitions and events, and his work can be found in several important enamel museums. From 1981 to 1995, he was the editor of the "Coburger Email-Rundbrief," an informative newsletter about enamel events, techniques, news, etc. For many years he has been a contributing editor to *Glass On Metal*.

Enamel can be designed freely. There are many techniques and procedures in enameling and their significance lays in the creative interpretation of the technique and its composition. In his exhibition, in the foyer of the town hall, it is possible to rediscover an ancient material and art form.

Donau-Kurier, November 12, 2010 – "Time for Gems"

by Maggi Zureck – translated from German

If somewhere in the world of art the word 'enamel' appears, sooner or later, the name Edmund Massow appears. We can rejoice in his adopted home of Geiselfeld an exhibition of representative works of the internationally renowned artist and author of technical enamel articles. In the corridors of City Hall Geiselfeld waiting for the viewer are no loud images which cry for attention... Massow is not a man of loud sounds. To discover his message it is advisable to look up close to his sometimes small sized work. Take your time. Their form of expression is as varied as the art of enameling itself.

Filigree jewelry with the brilliance of fiery opals and the glory of the pearl are just a small part of the works that reflect the impact of Edmund Massow's art.

The portrait of Jesus "Ecce homo" (Fig. 1) is almost devoid of color. But with a few strokes of cloisonné wire the face conveys the endless suffering. In contrast, 'Female Torsos' (Fig. 2 & 3) are soft and aesthetic in their nakedness.

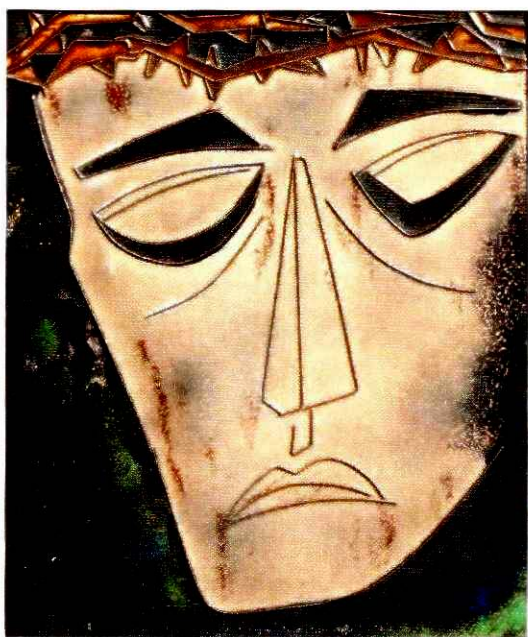


Fig. 1: "Ecce homo," cloisonné on copper, not ground, about 15 x 20 cm (about 6 x 9 inch)



Left Fig. 2: Enamel champlevé, Ground, 10 x 15 cm
Right Fig. 3: Enamel cloisonné, A combination between champlevé and cloisonné-enamel, 10 x 15 cm

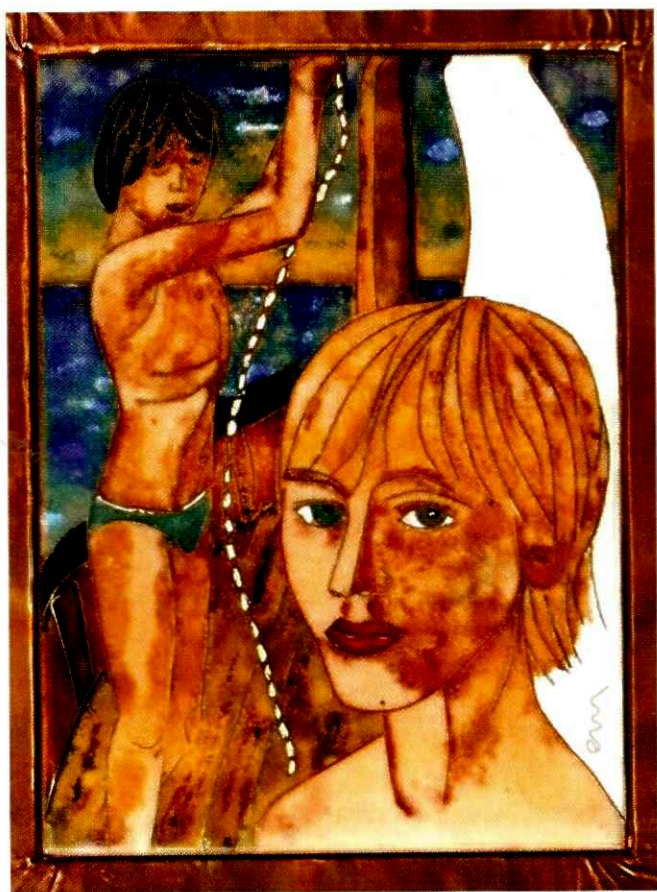


Fig. 4: "First Solo Sailing Trip"
Enamel cloisonné, matte ground, ca 17 x 23 cm

In Fig. 4, we see a sailing regatta in the fresh breeze while on the other side a sharp wind of intolerance blows.

The oppressive pair of works titled "2010 to 2030" (Figs. 5 & 6) show on the side "2010" the outstretched fingers of people screaming "foreigners out!" and on the opposite "2030" we see the squallers themselves are now the 'foreigners' and in the end humiliated and afflicted must flee.

The work in this exhibition has real meaning. The viewer reacts to what is seen. It may hit you in the marrow or crawl under your skin, but leaves you with something to contemplate. Mayor Christian Staudter made the statement at the opening that since the exhibition had opened, many visitors were very vocal about their admiration for the artist. Henriette Staudter (Cultural Consultant of the Village Geisenfeld) was happy that after much persuading everyone was on board and finally the exhibition came to be. Edmund Massow gave insight into the characteristics and history of enameling, visit www.emailkunst.de for more info.

Under the direction of Markus Lackermair, the ensemble "Blechspielzeug," (Tin Toy Ensemble, Fig.8) where Edmund's son Joachim is a member – his regular position is head of the town band – played baroque music and made the opening of the exhibition perfect.

Subsequently the visitors were treated to refreshments and a beautiful buffet sponsored by the Firma Wolf, hops-machines, Geisenfeld. The artist, mayor and culture director were on hand to talk about the exceptional exhibition. **gom**



Fig. 8: The ensemble "Blechspielzeug" (Tin-Toy)



Left Fig. 5: "Foreigners Out" 2010, Enamel cloisonné on copper, matte ground, ca. 15 x 15 cm
Right Fig. 6: "Asia Anno 2030, Foreigners Out" Enamel cloisonné on copper, matte ground, ca. 15 x 15 cm